

# MEA

Established 1989

## 2017

# FEBRUARY

## Class Calendar

# Mechanic's Education Association

**MEA GIVES YOUR SHOP THE COMPETITIVE EDGE NEEDED TO EXCEL IN TODAY'S EVER CHANGING AUTOMOTIVE INDUSTRY**

**Technical Training Classes - Online Training Webinars - Live Troubleshooting Techline**

THE NEW STATE ETEP CERTIFICATIONS CLASSES ARE READY!!! CALL 973-761-7420 for details.

Call the HOTLINE to Register for Classroom Training

973-761-7420





Register for Internet Classes at

[www.meatraining.com](http://www.meatraining.com)

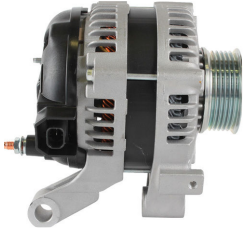
ALL WEBINARS ARCHIVED FOR 7 DAYS!!!! Miss a webinar??

Don't worry; send an e-mail request to

[MEAautotech@gmail.com](mailto:MEAautotech@gmail.com) and we will send you a link to view the archived version!

Monday	Tuesday	Wednesday	Thursday
6 <b>WE HAVE NJ INSPECTOR AND NEW NJ ETEP Sections 8, 9 &amp; 10 Classes</b>	7 <u>Evening Webinar 8:00 — 8:30pm</u> <b>GM Computer Controlled Charging Systems</b>	8 <b>NJ Emission Repair Update Class ETEP Section 8 (Advanced Gas) Part 2 6:00 pm - 10:00 pm</b>	9 <b>ALL WEBINARS ARCHIVED FOR 7 DAYS!!!</b> Miss a webinar?? Don't worry; send an e-mail request to <u><a href="mailto:meautotech@gmail.com">meautotech@gmail.com</a></u>
13 If you are only using the <u>Tech Line</u> , you are not getting the Full Benefit from your MEA Membership. <b>Go To School</b>	14 Call or E-Mail For NJ Emission Repair Update Classes 973-761-7420 <u><a href="mailto:meautotech@gmail.com">meautotech@gmail.com</a></u>	15 <b>NJ Emission Repair Update Class ETEP Section 8 (Advanced Gas) Part 3 6:00 pm - 10:00 pm</b>	16 <u>Evening Webinar 8:00 — 8:30pm</u> <b>FORD Variable Cam Timing Diagnosis</b>
20 <b>NOTE!!</b> Our NEW e-mail address <u><a href="mailto:meautotech@gmail.com">meautotech@gmail.com</a></u> Use For Webinar Passwords	21 <b>NJ Emission Repair Update Class ETEP Section 9 (Diesel) Part 1 6:00 pm - 10:00 pm</b>	22 <u>Evening Webinar 8:00 — 8:30pm</u> <b>Computerized Body Electrical Series Instrumentation</b>	23 You can prepare for ASE Testing Year Round. Many MEA Classes include material that will help you <b>Pass an ASE Test</b>  
27 <u>Evening Webinar 8:00 — 8:30pm</u> <b>SNAP-ON VERUS Labscope Set-Up Part 1</b>  	28 <b>NJ Emission Repair Update Class ETEP Section 9 (Diesel) Part 2 6:00 pm - 10:00 pm</b>	1 <b>Need an Emission Repair License (ERT) Look For ETEP Sections 1 thru 10 Coming Soon Call For Information</b>	2 <b>Call to Register For Classroom Training (973)761-7420 For Internet Training: Visit Our Website <a href="http://www.MEAtraining.com">www.MEAtraining.com</a></b>

**Internet**



**Tuesday February 7th**

**Webinar**

**GM Computer Controlled Charging**

In this webinar we will cover GM's Computer Controlled Charging Systems. GM's RVC, SARVC, and Electrical Power Management Systems will be covered. We will cover operation and testing of current sensors and the Computer Controlled alternators. Coverage will include different modes of operation such as Charge mode, Fuel Economy mode and Load Shedding. This class will help you quickly decide if it's a bad alternator, wiring or if the computer is the cause.

**To Sign up for Webinars Go Directly To the Calendar Page of our website  
[www.MEAtraining.com](http://www.MEAtraining.com)**

**Classroom**



**Wednesday February 8th**

**Classroom**

**ETEP Section 8 Part 2**

New Jersey Emission Technician Education Program (ETEP) Section 8 Part 2. This is part 2 of 3 parts to complete the Advanced Gas update portion of your Emission Repair License. Successful completion of both parts and passing of a test on the third evening will complete the Advanced Gas portion of your emission repair update.

**There is a fee for this class**

**Classroom**



**Wednesday February 15th**

**Classroom**

**ETEP Section 8 Part 3**

New Jersey Emission Technician Education Program (ETEP) Section 8 Part 3. This is part 3 of 3 parts to complete the Advanced Gas update portion of your Emission Repair License. Successful completion of both parts and passing of a test on the third evening will complete the Advanced Gas portion of your emission repair update.

**There is a fee for this class**

**Internet**



**Thursday February 16th**

**Webinar**

**FORD Variable Cam Timing Diagnosis**

This webinar will focus on testing the FORD variable cam timing systems. Testing of oil control solenoids, cam phasers, and cam and crank sensors will be covered. Testing will be done with an emphasis on scan data and labscopes to diagnose problems. Scan pids VCTADV, VCTFAULT, VCTADVERR, VCTDC, and others will be covered. Coverage will include EPS, IPS, DEPS and DIPS. This is a must-attend class for all levels of technicians.

**To Sign up for Webinars Go Directly To the Calendar Page of our website  
[www.MEAtraining.com](http://www.MEAtraining.com)**

**Classroom**



**Tuesday February 21st**

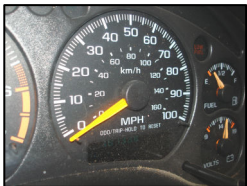
**Classroom**

**NJ ETEP Section 9 Part 1**

New Jersey Emission Technician Education Program (ETEP) Section 9 Part 1. This is part 1 of 2 parts to complete the Advanced Diesel update portion of your Emission Repair License. Successful completion of both parts and passing of a test on the second evening will complete the Advanced Diesel portion of your emission repair update.

**There is a fee for this class.**

**Internet**



**Wednesday February 22nd**

**Webinar**

**Computerized Body Electrical Series Instrumentation**

In this training webinar series we will be covering body electrical components and systems that are controlled by some type of electronic module. The purpose of this class is to provide diagnostic and testing information on electronically controlled Instrumentation. For This webinar we will be looking at vehicle speed. The application of scan tool testing, voltage and Labscope testing will be covered. **Wire by wire** analysis of this system will be completely covered.

**To Sign up for Webinars Go Directly To the Calendar Page of our website  
[www.MEAtraining.com](http://www.MEAtraining.com)**

**Internet**



**Monday February 27th**

**Webinar**

**SNAP-ON VERUS Labscope Series: Set Up**

In this training series we will be covering set up of the Snap-On VERUS labscope. Covered will be the different settings to the labscope and there functions. We will cover what settings must be change to get an accurate labscope pattern and prevent aliasing. Some of the settings covered will be traces, sweep, trigger and slope. This is a must see for anyone interested in using the VERUS labscope.

**To Sign up for Webinars Go Directly To the Calendar Page of our website  
[www.MEAtraining.com](http://www.MEAtraining.com)**

**Classroom**



**Tuesday February 28th**

**Classroom**

**NJ ETEP Section 9 Part 2**

New Jersey Emission Technician Education Program (ETEP) Section 9 Part 2. This is part 2 of 2 parts to complete the Advanced Diesel update portion of your Emission Repair License. Successful completion of both parts and passing of a test on the second evening will complete the Advanced Diesel portion of your emission repair update.

**There is a fee for this class.**